



多盘位2.5寸/3.5寸硬盘底座
Multi-Bay 2.5"/3.5"
SATA HDD/SSD Docking Station

6638US3-C
6648US3-C

用户手册
User's Manual



官方网站



Website

发行版本: 6638/6648US3-C-MUG-R1
制 造 商: 深圳市元创时代科技有限公司
Manufactured by ORICO Technologies Co., Ltd.
售后热线/Hotline: 400-6696298
联系热线/Tel: 86-755-25196059
邮箱/E-mail: supports@orico.com.cn
官方网站: www.orico.com.cn
Official Website: www.orico.cc
公司地址: 深圳市龙岗区布吉街道甘李工业园甘李六路
12号中海信创新产业城14A栋903-904
Company Add : 903-904, 14A, Zhonghaixin Innovation
Industrial Park, 6th Gan Lee Road, Buji,
Longgang District, Shenzhen, China
工厂地址: 东莞市常平镇塘角路24号元创动力(ORICO)
互联网产业园
Factory Add : ORICO Internet Oriented Industrial Park,
No.24 Tangjiao Rd, Changping County,
Dongguan, China

感谢您购买本产品，在使用之前请仔细阅读本说明书。
We thank you for purchasing our products. Please read this manual carefully before use.

语言/ Language

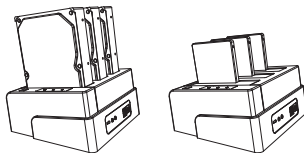
- ▶ 中文 ----- 02-12
- ▶ English ----- 14-24

快速安装指南

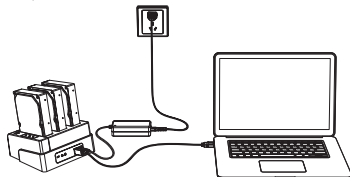
1. 取出本产品，仔细查看清楚硬盘接口的方向与本品方向是否一致（切勿在错误的方向下强行装入硬盘），如下图所示：



2. 确定方向以后，将硬盘轻轻插入硬盘底座即可，请注意一定要将接口插接稳固，如图所示：



3. 连接数据线和适配器电源：(数据线一端连接至电脑，另一端连接至移动硬盘盒USB接口) 如图：



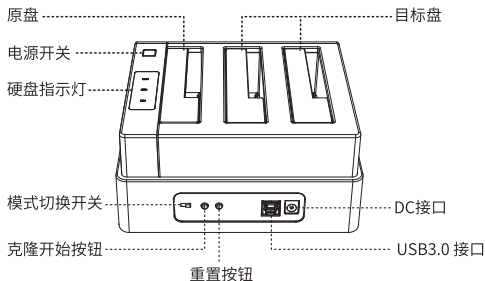
4. 打开产品开关，正常使用。

产品简介

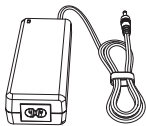
ORICO多盘位硬盘座，它以人性化的科技考虑，减除了繁琐的硬盘安装程序，即插即用，数据传输档案交互备份快速便捷，产品通过USB接口传输，能够灵活的连接到电脑，无论是2.5寸还是3.5寸SATA硬盘都可以使用，直接将硬盘插入插槽中即可使用，支持热插拔功能，独立电源装置给设备供电，支持硬盘克隆，脱机对拷功能，是您数据存储的首选工具。

产品图示

以ORICO 6638US3-C 双盘位硬盘座为例，ORICO 6648US3-C 同理。



数据线



电源适配器



电源线

产品特性

- ◆ 适用于市面上的2.5/3.5寸SATA 硬盘。
- ◆ 支持多个硬盘同时读取数据。
- ◆ 免工具，支持热插拔。
- ◆ 硬盘直立安装使用，有效的节约桌面位置的使用面积。
- ◆ 特色LED指示灯，对硬盘的读写状态进行监控。
- ◆ 支持脱机克隆功能。
- ◆ 在硬盘克隆完成后，蜂鸣器将会 "嘀" 三声来提示对拷完成。

产品规格

产品型号	6638US3-C, 6648US3-C
产品尺寸	144 x 81 x 171mm (6638US3-C) 144 x 81 x 217mm (6648US3-C)
产品材质	塑胶
兼容硬盘	2.5寸/3.5寸 SATA硬盘
输出接口	USB3.0
支持系统	Windows 98/Me/2000/XP/Vista/7/8/8.1; Mac 9.1above
安全认证	CE, FCC
操作环境	0°C/50°C (使用) -20°C/70°C (保存)

产品和配件清单

请依照以下清单检查包装内的产品和配件是否齐全。如果有任何问题可随时联系您的经销商或者ORICO客户服务中心以获得支援。

ORICO多盘位硬盘底座	1个
电源适配器	1个
电源线	1根
数据线	1根
使用说明书	1本
感谢卡	1张

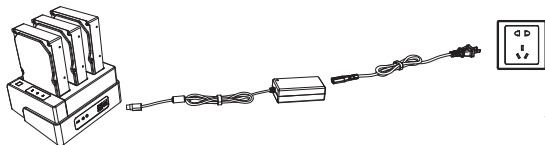
温馨提示：因产品生产批次不同，产品包装、外观或者配件可能会有所变更，并与此使用说明提供的图片、外观、说明不一致，请您以收到的实际产品为准，若由此给您带来不便请您谅解，谢谢！

脱机克隆使用说明

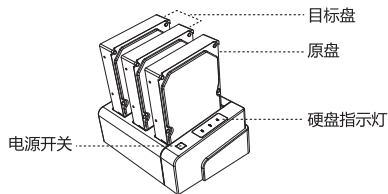
除了可以同时运行多个 SATA HDD 以外，更让人兴奋的是此款还多增加了一个硬盘脱机对拷功能，也就是通常我们所说的硬盘克隆。可以在不连接计算机的情况下将原盘的资料备份到目标盘里面，您可以将模式按钮开关调至 "CLONE"，通过 "START" 开关可以开始将您的硬盘克隆。

脱机克隆操作步骤：

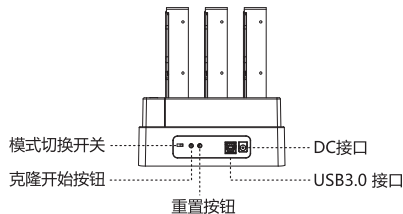
1. 接入电源。



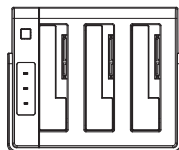
2. 接入磁盘，Source位置磁盘为原盘，表示存在原始资料的磁盘，Target位置的磁盘为目标盘，表示资料将要写入的磁盘。



3. 一切准备就绪，将模式开关调至“CLONE”端，按下电源开关，等指示灯全部变成蓝色，先按一下“RESET”重置按钮，然后连续按两下“START”键，指示灯变成红色并且闪烁，表示开始克隆。



4. 克隆进行时，面板上的硬盘指示灯会亮起，红色指示灯闪烁。
5. 克隆完成后，机器会发出三声鸣响，硬盘指示灯停止闪烁。



6. 完成后，关闭电源开关，取出硬盘，就可以使用硬盘了。

有资料请先备份，克隆会先清空目标盘内所有资料。
量必须大于或者等于原始磁盘容量，否则将无法拷贝。
入USB数据线。
移动磁盘，不要断开电源。

故障排除

如果出现硬盘无法正确安装的情况，请尝试以下方法解决问题。

1. 检查USB设备与电脑是否连接妥当，如果您使用的是机箱前面的接口，试着使用机箱后的接口。
2. 确保线材和电源适配器都连接妥当。
3. 当设备连接完成时，电源指示灯是否是亮的。
4. 确保硬盘已经格式化，如果没有，右击我的电脑，选择管理-磁盘管理，便可看到所有连接到电脑的硬盘，检查磁盘是否已经格式化。如果没有，请参照 "Windows系统下怎样格式化硬盘" 的指示对硬盘进行格式化。
5. 有条件的情况下，将设备通过其他USB接口连接，或连接至其他电脑检测是否是产品本身的问题。
6. 使用其他USB3.0线材或打印机的USB2.0线材连接设备，检测是否是产品本身的问题。
7. 使用其他12V的电源适配器连接设备，看设备是否能正常工作。

如果您遇到任何问题，请与我们的客服部门联系，并将硬盘与电脑系统的具体信息以截屏的形式发送到客服邮箱，我们的工作人员会尽快与您联系。
ORICO客服中心网址：www.orico.com.cn
客服邮箱：Supports@orico.com.cn
客服热线：86-755-25196059

初始化新硬盘

温馨提示：如您的硬盘是新买的，则需要进行硬盘分区、格式化才可使用。

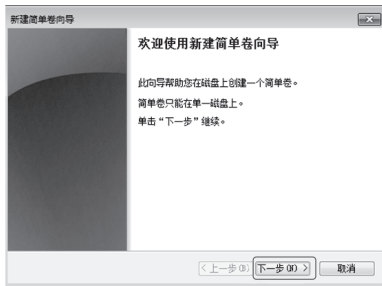
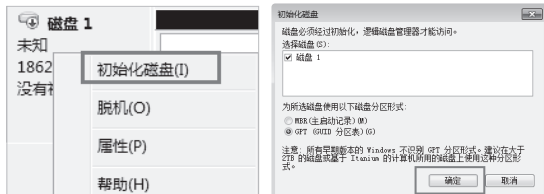
以下以Win7系统自带分区和格式化

1. 右键单击桌面计算机，选择 "管理"，进入计算机管理后选择 "磁盘管理"。



2. 在磁盘名称区域右击，选择 "初始化磁盘"，然后在右边磁盘区域右击，选择 "新建简单卷"，点击 "下一步"。





3. 此时出现磁盘分区大小, 根据您的需求, 您可以选择将磁盘分为一个区或者多个区, 简单卷大小=当前分区的容量, 1G=1024MB, 若只需要一个分区, 数值调到最大即可 (默认数值是最大), 然后点击“下一步”。



4. 后面不需要更改, 直接点击“下一步”, 然后点击“完成”。



5. 此时磁盘就出现在您的电脑中,正常使用即可。(若需分多个区,重复以上步骤即可)



移除设备

注意:请勿强行移除硬盘盒以及硬盘,以免造成资料或磁盘错误、损坏或丢失。

1. 在Windows系统中移除设备

停止使用设备,点击任务栏右下角的"安全移除硬件和媒体"按钮,然后点击要移除的设备。当系统提示"安全地移除硬件"时,即表示已经成功从系统中移除,从计算机中拔出设备。

2. 在Mac OS中移除设备。

停止使用设备,并选中要移除的设备,然后移动到垃圾篓即可。

注意事项

1. 硬盘是精密设备,请预先阅读其使用说明书并正确操作。
2. 如果您使用的新买的硬盘,则需要在硬盘初始化后才可以正常使用。

3. 请勿撞击、扔掷、针刺本产品,并避免跌落、挤压、弯曲产品。
4. 请勿在潮湿环境中使用或储存本产品,并避免本产品被液体浸湿或冲洗。
5. 请勿在高温、高粉尘环境中使用产品,并远离火源。
6. 请勿将本产品放置在日光中曝晒。
7. 请勿将本产品置于有腐蚀性物品的环境,严禁使用其他化学溶液清洗本产品。
8. 请勿将产品及附件放置于具有强大电磁场的器具中,以及远离磁性设备。
9. 请将产品及附件放在儿童触摸不到的地方,请勿让儿童在无人监管的情况下使用产品。
10. 请勿擅自拆卸和维修产品及附件,只有授权机构才可维修本产品。
11. 请使用本公司指定的电源适配器。
12. 本产品使用过程中如有任何问题,可随时与您的经销商或ORICO客户服务中心联系。

保修条款

保修条款

本产品依照《中华人民共和国消费者权益保护法》和《中华人民共和国产品质量法》提供售后三包服务。

1. 自签收之日起7日内,产品出现性能故障并由ORICO客户服务中心鉴定之后,可享受退货、换货或免费维修服务。
2. 自签收之日起15日内,产品出现性能故障并由ORICO客户服务中心鉴定之后,可享受换货或免费维修服务。
3. 自签收之日起12个月内,产品出现性能故障并由ORICO客户服务中心鉴定之后,可享受免费维修服务。

保修限制条款

深圳市元创时代科技有限公司保修条款不适用于以下情况:

1. 超过保修条款期限。
2. 未经授权拆解、改动或维修过的产品,以及碰撞、进液、摔坏等人为损坏。

3. 水灾、火灾、雷击、地震等不可抗力造成的损坏。
4. 与本使用说明不一致的错误操作。
5. 产品或包装盒条码与实物不符，以及被涂改、撕毁。
6. 未经授权使用非原装配件造成的损坏。
7. 无有效的购买凭证。

声明

深圳市元创时代科技有限公司，版权所有

感谢您购买ORICO产品，为了更好的使用本产品的所有功能，请您在使用产品之前仔细阅读本使用说明介绍的产品功能、使用说明以及注意事项。ORICO® 为深圳市元创时代科技有限公司注册商标。

本使用说明中提及的其他所有产品名称、商标、服务名称和公司名称，由其各自的所有者拥有。

本使用说明所提及的信息仅供参考，深圳市元创时代科技有限公司保留随时修改本使用说明中任何信息的权利，无需提前通知。除非有特殊约定，本使用说明仅作为使用指导，本使用说明中的所有陈述、信息等均不构成任何形式的担保。

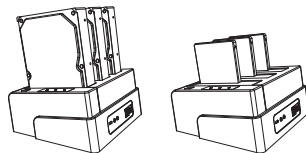
深圳市元创时代科技有限公司不对因使用本使用说明相关内容及本使用说明描述的产品而产生的任何特殊的、附带的、间接的、继发性的损害进行赔偿，也不对任何利润、数据、商誉或预期节约的损失进行赔偿。在相关法律允许的范围內，在任何情况下，深圳市元创时代科技有限公司对您因为使用本使用说明描述的产品而遭受的损失的最大责任（除在涉及人身伤害的情况下根据适用的法律规定的损害赔偿外）以您购买本产品所支付的价款为限。

Quick Start Guide

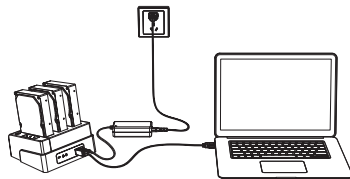
1. Take out the product and mind the orientation fit with the interface of hard drive or not, please note forceful installation may cause damage to both product and hard drive.



2. Gently insert hard drive into docking station, as indicated.



3. Attach USB Cable and Power Adapter to the Docking Station.



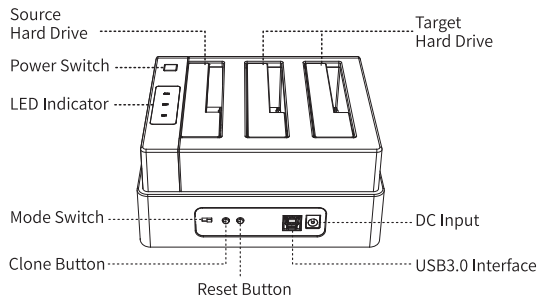
4. Turn it ON via the ON/OFF Switch ,and normal use.

About this Product

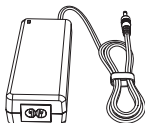
ORICO multi-bay HDD dock is user-friendly, eliminating the cumbersome installation process, plug and play, fast and convenient. The product can be flexibly connected to the computer, suitable for 2.5/3.5 inch SATA disk, enclosed with power adapter, supports clone function, it is the best choice for data storage.

Product Overview

Take ORICO 6638US3-C dual-bay HDD dock as an example, ORICO 6648US3-C is the same.



USB Data Cable



Power Adapter



Power Cable

Feature

- Tool-free installation.
- Compatible with 2.5/3.5 inch hard drives.
- Support connectivity with multi hard drives simultaneously.
- Tool-free installation, hot swapping supported.
- Stand-up design, saves your space on desktop.
- LED indicates status of usage.
- Standalone clone supported.
- Three short beep will sound up when clone is over.

Specifications

Model	6638US3-C 6648US3-C
Dimension	144 x 81 x 171mm (6638US3-C) 144 x 81 x 217mm (6648US3-C)
Chassis	Plastic
Compatible HDD Type	2.5/3.5 Inch HDD
Output	USB3.0
System Requirement	Windows 98/Me/2000/XP/Vista/7/8/8.1; Mac 9.1above
Certification	CE and FCC approval
Temperature	0°C/50°C(Usage) / -20°C/70°C (Storage)

What's in the Box

Please check if the following product and accessories in the box before using this product. Do remember to contact your retailer or ORICO customer care team when anything missing or broken.

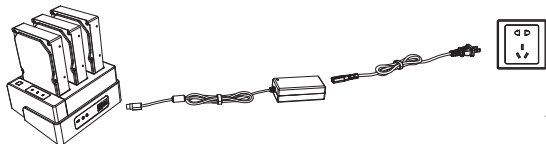
ORICO Multi-Bay Hard Drive Dock	1PCS
Power Adapter	1PCS
Power Cable	1PCS
USB Data Cable	1PCS
User Manual	1PCS
Service Card	1PCS

Warm prompt: The product, accessories and package may optimized for better application or performance. We sincerely sorry that they may not exactly match with what showing in manual and appreciate your please adhere to the original products and contact orico customer care team if any further concern. Thank you very much.

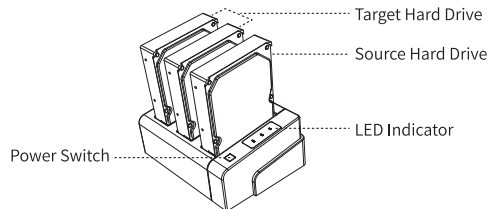
Instruction for Standalone Clone

This hard drive dock supports hard drive standalone clone, without connectivity to a host computer, data could be transferred to another hard drive, this makes your data safer.

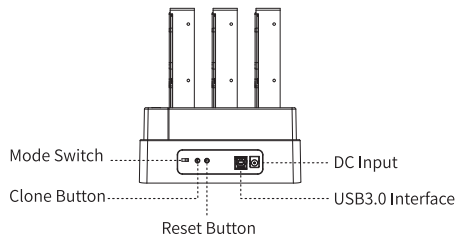
1. Plug in power adapter.



2. Insert "source" HDD and "target" HDD in corresponding slot, please note that target hard drive must has a larger capacity than the source ones.

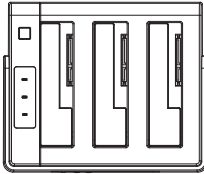


3. After preparation work is done, switch to "CLONE" end, turn on power, wait till all LED indicators turn blue, press the "RESET" button to reset then click "START" twice. When the LED flashes in red, it means cloning is in progress.



4. The red LED will flash when cloning is undergoing.

- When it is done, all the LED lights will stop flashing, and three short beep will sound up when the process is over.



- After clone is done, turn off power and get hard drives out for other use.

Note:

- The clone process will clear data of "TARGET" hard drive, so please make sure you have a copy of that.
- "TARGET" hard drive must have a larger capacity than "SOURCE" one.
- When connected with a USB cable, clone function will not be activated.
- During the cloning process, do not move both hard drives and make sure power adapter is well connected.

Trouble Shooting

Try the following measures when a problem occurs.

- Make sure data cable is appropriately connected, if you are using USB port in the front of chassis, try a one in the back.
- Make sure power adapter is appropriately connected.

- Check out power LED indicator is light on when connectivity is done.
- Make sure your hard drives have been formatted, If not, get it formatted under guidance in this user manual.
- If available, try to reconnect with another USB port..
- In order to check your hard drive, try to reconnect with other USB3.0 cable, or a USB2.0 cable from a printer.
- Try another 12V power adapter.

If your problem still exist, please reach to our customer service department for further help, and we suggest you provide us with detail information of hard drive and system version via screenshots.

ORICO Global Site: www.orico.cn

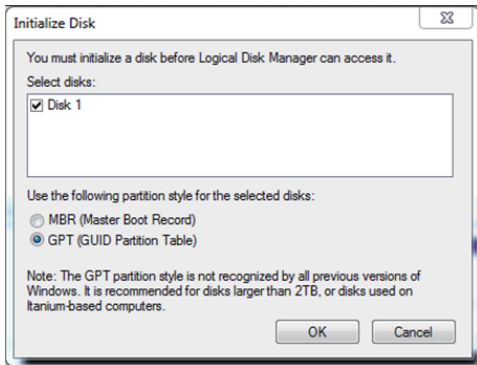
Customer Service Email: Supports@orico.com.cn

Hotline: 86-755-25196059

Initialize and Format New Drives under Microsoft Windows

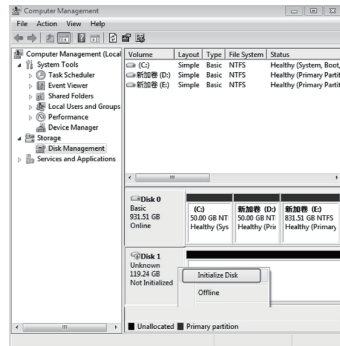
New drive or raid need to be initialized and formatted or it won't work. Please follow the following instruction to initialize and format your drive under microsoft windows if you are using a new drive or setting a new raid.

- Please ensure you have mounted drive to ORICO enclosure and attach the enclosure with drive to computer properly. Then right click on computer, select "Manage", Open "Disk Management" in "Storage" of opened windows. A popup will come up here suggests a new drive need to be initialized. Please select the disks and click ok will get it initialized.

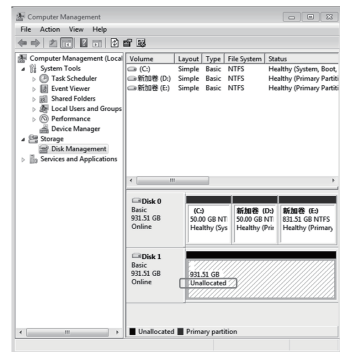


Note:

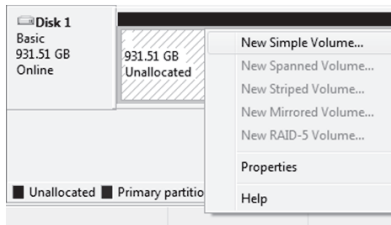
- A. If you are mounting a drive which not larger than 2TB and may using on a windows vista or earlier computer, initialize with partition style mbr is recommended.
- B. If you are mounting a drive which larger than 2TB, please initialize with partition style gpt. Or you will get 2tb of the drive applicable and the rest will be unable to use.
- C. If you closed this windows by mistake or the windows have never come up, right click on the "Disk Number " and select "Initialize Disk" will get the windows come up.



2. Any HDD or SSD attached to this computer will shows in "Disk Management" we opened in Step 1. The unallocated drive is your new drive which need to be formatted.



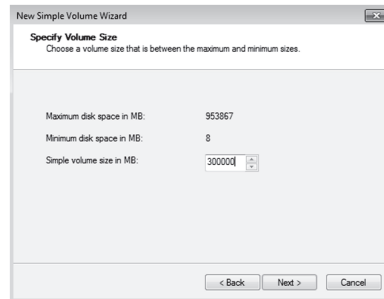
3. Right click on unallocated new drive, select "New Simple Volume" will start to add new volume and format it.



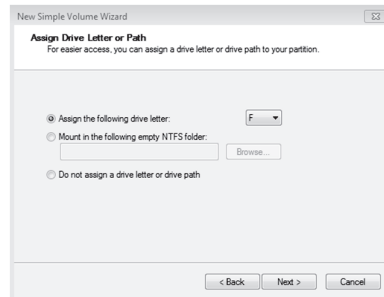
4. Click "Next".



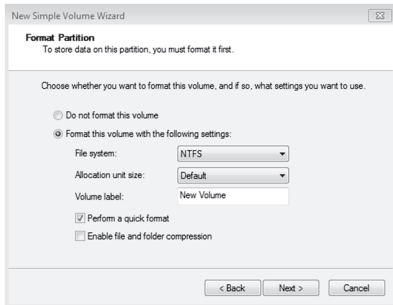
5. Set the volume size of your new volume. You can customize the size. Or you can set the size of the volume at maximum disk space to set the drive to one volume.



6. Assign new drive letter for the new volume. Drive letter such as C, D, E, F, G will shown in computer and explorer for application.



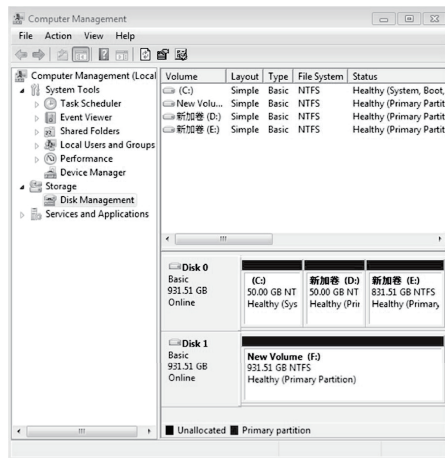
7. Format your new volume. You can set the file system(NTFS or FAT32), Allocation unit size and volume label here. Perform a quick format is recommended. Please click "Next" when everything is configured.



8. Click "Finish" will start to format the volume.



9. The formatting will take 5 to 30 seconds. When the formatting is done, the new volume will be ready for application.



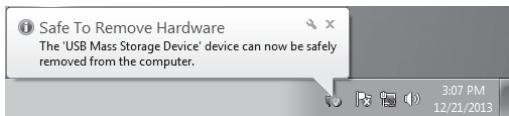
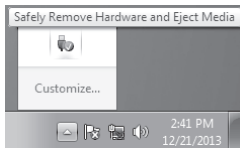
10. If you have not set the size of the volume at the maximum disk space. the rest space of the drive will be unallocated and you can repeat step 3 to 9 to get them created and formatted.

Remove Devices

Note: Please follow the instruction of user manual and do not force remove devices while application. Force remove may cause error or damage to the files or devices.

1. Remove under microsoft windows

Stop the using the devices and click "safely remove hardware and eject media" icon on taskbar, select "eject the usb device" to remove the devices safely when the system suggests "safe to remove hardware".



2. Remove from Mac OS: Stop the reading/writing to the devices and drag it in to trash.

Notice

1. HDD enclosure is precision equipment. Please firstly read the user manual and operate it correctly.
2. The hard disk used for the first time needs to be initialized.
3. Avoid high-temperature, low-temperature, humid or dust environment.
4. Please do not hit, throw, or puncture the product, and avoid dropping, squeezing, or bending.
5. Please do not place this product in a corrosive environment. Do not use other chemical solutions to clean the product.
6. Please do not place the product or accessories in appliances with

strong electromagnetic fields and away from magnetic equipment.

7. Please keep the product and accessories away from children. Do not allow children to use the product without supervision.
8. If you need a product with a power adapter, please use the power adapter specified by our company.
9. Please do not disassemble and repair the product or accessories without the authorization of ORICO.
10. If you have any questions during the use of this product, please feel free to contact your dealer or ORICO customer service center.

Declaration

ORICO Technologies Co., Ltd, all rights reserved.

Thank you so much for purchase ORICO product. Please Refer to this manual when using orico product or experienced issues. Additionally, please kindly contact ORICO customer care team if any concern.

ORICO® is registered trademark of ORICO Technologies Co., Ltd Any other product, trademark, service or company mentioned herein is trademark or registered trademark of the respective owners.

This manual is for reference only and it's not a guarantee. ORICO Technologies Co., Ltd reserve all rights of maintenance to this manual and shall not liable for any lost or damage resulting from this manual. Please kindly contact orico customer care team when any concern. ORICO Technologies Co., Ltd shall not liable for compensation and maintenance of the following conditions.

1. Any special, incidental, indirect and secondary lost or damage.
2. Profit and revenue lost or damage.
3. Files, data, drive and device lost or damage.

Note: Compensation for lost or damage resulting from this manual or orico product shall not exceed the payment of your purchase to this product.

FCC and CE Radiation Norm

FCC

This device complies with part 15 of the FCC Rules. Operation is subject to the following two conditions: (1) This device may not cause harmful interference, and (2) this device must accept any interference received, including interference that may cause undesired operation.

CE

This equipment has tested and found to comply with the limits of the European Council Directive on the approximation of law of themember states relating to electromagnetic compatibility (89/336/EEC) according to EN 55022 Class B.

FCC and CE Compliance Statement

These limits are designed to reasonable protection against frequency interference in residential installation. This equipment generates, uses and can radiate radio frequency energy, and if not installed or used in accordance with the instructions, may cause harmful interference to radio communication. However, there is no guarantee that interference will not occur in television reception, which can be determined by turning the equipment off and on. The user is encouraged to try and correct the interference by one or more of the following measures: Reorient or relocate the receiving antenna, increase the separation between the equipment and the receiver. Connect the receiver to a different power outlet. If the interference persists, contact the manufacturer of the receiver for more information.

CAUTION!

The Federal Communication Commission warns the user that changes or modifications to the unit not expressly approved by the party responsible for compliance could void the user's authority to operate the equipment.

Disclaimer Statement

Thank you for your choice to purchase and use ORICO products! Please read this user manual carefully before using the product, to ensure correct operation method. We strongly recommend you to make data backup before using this product so as to make sure your data are completely safe. As the equipment manufacturer, ORICO do not afford any direct or indirect responsibility for documents and data loss caused by any factor. Manufacturers do not have the obligation to afford any compensation and data recovery. ORICO Technologies Co., Ltd do not make special promise to users and distributors, ORICO do not afford any unexpected data loss, direct or indirect loss. If you start to use this product, that means you understand and accept this disclaimer.

Copyright description: All ORICO products and relative data belong to ORICO Technologies CO., LTD. ORICO have the right of produce and copyright, reproduction is prohibited. This user manual includes, but not limited to all information with copyright protection, without permission from ORICO, no one is allowed to clone, copy, excerpt, translation or use for other things.

This user manual does not have any form of warranty, position statement or other hint. If there is any direct or indirect data loss, economic loss or enterprise bankruptcy caused by this user manual or its product information mentioned, ORICO and its staff will not afford any responsibility for that. Besides, the product specification and information mentioned in this user manual are just for your reference, and contents will update at any time without further notice. ORICO will not take responsibility for any error or negligence in this user manual.

The product name mentioned in this user manual can be only used for identification, and this name may be part of the other company's registered trademark or production rights. When below two situations happened, this product will not have ORICO's warranty and service.

(1) The product does not belong to ORICO's authorization of warranty, specification alteration and parts replacement.

(2) Product bar code is vague or lost.

The user manual will update as the product specification or driver's change. Please visit the ORICO official website to get the details: www.orico.cc