



6528US3-C

双盘位硬盘拷贝机

Dual bay SATA hard  
drive duplicator

用户手册

User Manual



官方网站



Website

发行版本 : 6528US3-C-MUG-R0

执行标准 : GB 4943.1-2011

制 造 商 : 深圳市元创时代科技有限公司

Manufactured by ORICO Technologies Co., Ltd.

电话 /Tel: 86-755-25196059

邮箱 /E-mail: supports@orico.com.cn

官方网站 : <http://www.orico.com.cn>

Official Website: <http://www.orico.cc>

公司地址 : 深圳市龙岗区布吉街道甘李工业园甘李六路

12 号中海信创新产业城 14A 栋 903-904

Company Add : 903-904, 14A, Zhonghaixin Innovation

Industrial Park, 6th Gan Lee Road, Buji,

Longgang District, Shenzhen, China

工厂地址 : 东莞市常平镇塘角路 24 号元创动力 (ORICO)

互联网产业园

Factory Add : ORICO Internet Oriented Industrial Park,

No.24 Tangjiao Rd, Changping County,

Dongguan, China

感谢您购买本产品, 在使用之前请仔细阅读本说明书。

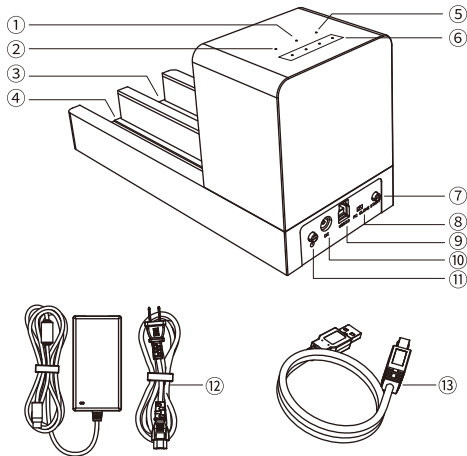
We thank you for purchasing our products. Please read this manual carefully before use.

### 语言/ Language

- ▶ 中文 ----- 02-12
- ▶ English ----- 13-25

## 产品介绍

ORICO 6528US3-C是一款多功能性双盘位硬盘拷贝机, 无需连接电脑, 支持一键操作双硬盘脱机克隆拷贝硬盘数据, 采用SATA3.0克隆芯片方案, 最快可达6Gbps克隆传输速率; 亦可通过USB3.0数据线连接电脑, 同时给两块硬盘读取/写入数据, 支持5Gbps速率传输, 支持UASP加速协议。



- ① 电源指示灯
- ② 目标盘指示灯
- ③ Source源盘插槽
- ④ Target 目标盘插槽
- ⑤ 源盘指示灯
- ⑥ 克隆进度指示灯
- ⑦ START按键
- ⑧ PC/CLONE键
- ⑨ USB3.0接口
- ⑩ DC电源接口
- ⑪ 电源开关
- ⑫ 电源适配器
- ⑬ USB3.0数据线

## 产品特性

- 采用SATA3.0主控芯片,最高支持6Gbps克隆拷贝传输速率;
- 支持一键脱机克隆拷贝功能;
- 支持同时读取两个硬盘,数据传输及档案交互备份快捷又便利;
- 兼容支持各品牌2.5寸/3.5寸SATA硬盘/SSD固态硬盘;
- 外部USB3.0接口输出,可支持5Gbps高速率传输;
- 免工具设计,快速拆装硬盘;
- 支持智能休眠功能,节能环保,提高硬盘使用寿命;
- LED指示灯监控,随时监视硬盘工作状态;
- 即插即用,支持热插拔功能。

## 产品规格

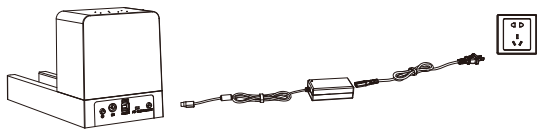
产品型号	6528US3-C
产品尺寸	212(L)×114(W)×90(H)mm
产品材质	ABS
输入接口	SATA3.0
输出接口	USB3.0
传输速率	5Gbps
兼容硬盘	2.5寸/3.5寸SATA硬盘/SSD固态硬盘
数据线	USB Type-A/M to USB Type-B/M, 长度1米
支持系统	Windows / Mac / Linux

## 产品和配件清单

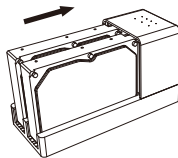
ORICO 双盘位硬盘拷贝机	-----	1PCS
12V=4A电源适配器	-----	1PCS
USB3.0 数据线	-----	1PCS
使用说明书	-----	1PCS
感谢卡	-----	1PCS

## 快速使用指南

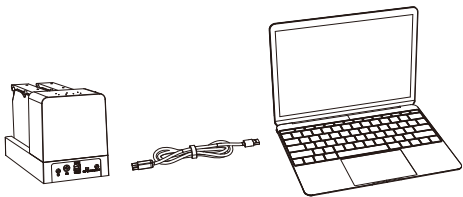
- 1.外接上电源适配器供电。



- 2.插入硬盘。



- 3.连接上USB3.0数据线。



4. 拨动工作模式至“PC”模式，打开电源开关，电脑自动安装完驱动，检测、识别到硬盘，即可正常使用！

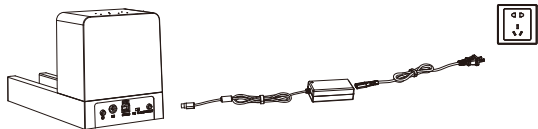


#### 硬盘移除说明：

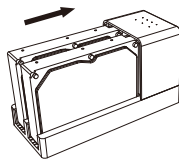
在PC模式下，当拷贝机需要更换硬盘或关机时，请先停止对硬盘的数据读写操作，从电脑端安全卸载移除设备，然后进行关机和更换硬盘，强行断电关机可能会导致您的数据异常或丢失。

## 硬盘克隆操作

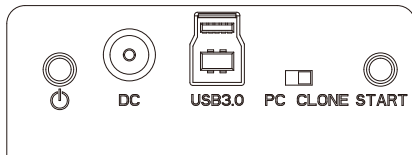
1. 外接上电源适配器供电。



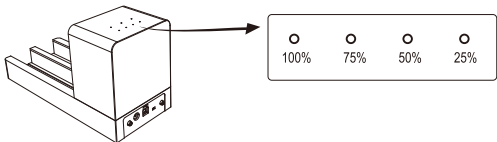
2. 接上硬盘。（Source位置接入有原始资料的源盘，Target位置接入即将写入资料的目标盘）



3. 打开电源，拨动工作模式至“CLONE”，等待片刻，拷贝机自动扫描检测硬盘，硬盘位指示灯亮起。



4. 连续按两下“START”键，蜂鸣器会响起，发出“滴滴”提示声表示克隆开始。
5. 克隆进行时，面板上的相应拷贝指示灯会闪烁，提示拷贝进度。当克隆完成，4个指示灯全亮蓝灯，并发出响铃提示，10分钟后硬盘进入休眠状态。



错误警告提示功能：

- 如果硬盘只插到目标盘位置，进行克隆，蜂鸣器会一直长鸣提示错误。
- 如果只插入一个硬盘，要进行克隆功能，蜂鸣器会一直长鸣提示错误。
- 如果有目标盘的容量小于源盘容量，蜂鸣器会长鸣提示错误，相应的盘位灯闪烁提示。

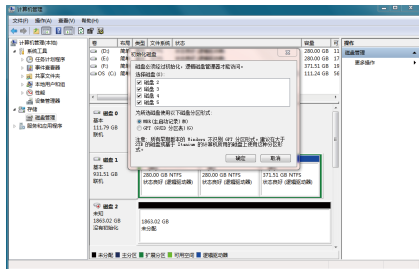
⚠ 克隆注意事项：

1. 目标盘的容量必须大于或者等于源盘容量，否则将不能拷贝。
2. 目标盘内如果有资料请先备份，克隆会先清空目标盘内所有资料。
3. 克隆时间取决于硬盘容量大小，请耐心等待。
4. 克隆时请不要关掉电源或者取下硬盘。
5. 执行克隆功能不需要通过电脑，因此无需连接USB数据线。

## 硬盘格式化分区操作

使用全新的硬盘需要先初始化、格式化分区，否则无法正常工作。如果是全新的硬盘，请按照以下方法对硬盘进行初始化、格式化分区操作。

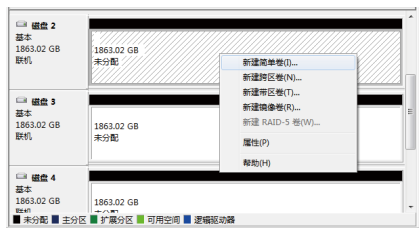
- (1) 请确保ORICO拷贝机经正确安装，连接到了电脑。
- (2) 鼠标右击“计算机”，然后选择“管理”，在打开的新窗口找到“磁盘管理”，自动弹出了初始化新硬盘的窗口，选择“MBR”或“GPT”分区形式，点击“确认”。



注意：

- 如果硬盘容量小于2TB，请使用MBR硬盘分区形式初始化硬盘。
- 如果硬盘容量大于2TB，则必须要使用GPT硬盘分区形式初始化硬盘，否则将只有2TB容量可用，多余的容量无法使用。

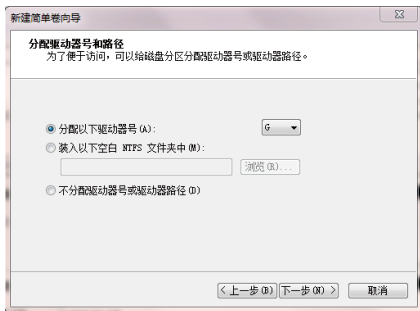
- (3) 鼠标右击“未分配”的硬盘空间，选择“新建简单卷”，开始给硬盘分区格式化。



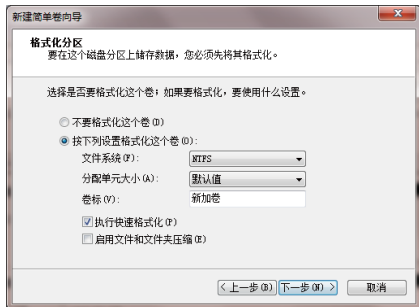
- (4) 设置硬盘分区的容量大小,可自定义分区容量,或者默认设置最大简单卷大小,将会只有一个硬盘分区。



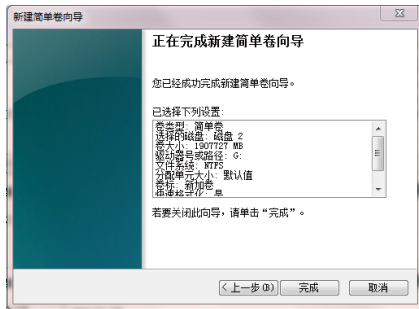
- (5) 分配硬盘盘符和路径, (如:资源管理器C, D, E, F, G盘) 盘符。



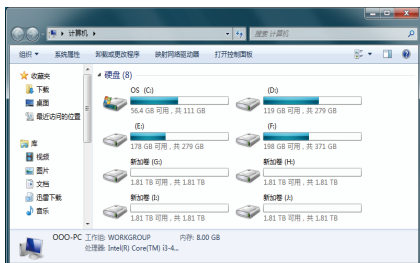
- (6) 格式化分区,可以设置文件系统格式(NTFS、FAT32或exFAT), 分配单元大小(默认即可),卷标名称,推荐“执行快速格式化”, 配置完成,点击“下一步”。



- (7) 点击“完成”执行最后的格式化分区操作。



- (8) 格式化将需要5-30秒钟, 格式化完成后将会在资源管理器显示新的分区盘符。



## 保修说明

### 保修条例

ORICO 产品的售后服务严格依据《中华人民共和国消费者权益法》、《中华人民共和国产品质量法》，实行售后三包服务，服务内容如下：

1. 自签收之日起7日内, 产品出现性能故障并由ORICO客户服务中心鉴定之后, 可享受退货、换货或免费维修服务。
2. 自签收起8-15日内, 产品出现性能故障并由ORICO客户服务中心鉴定之后, 可享受换货或免费维修服务。
3. 自签收之日起12个月内, 产品出现性能故障并由ORICO客户服务中心鉴定之后, 可享受免费维修服务。

## 保修限制条款

深圳市元创时代科技有限公司保修条款不适用于以下情况：

1. 超过保修条款期限。
2. 未经授权拆解、改动或维修过的产品, 以及碰撞、进液、摔坏等人为损坏。
3. 水灾、火灾、雷击、地震等不可抗力造成的损坏。
4. 与本使用说明不一致的错误操作。
5. 产品或包装盒条码与实物不符, 以及被涂改、撕毁。
6. 未经授权使用非原装配件造成的损坏。
7. 无有效的购买凭证。

## 声明

深圳市元创时代科技有限公司, 版权所有

感谢您购买ORICO产品, 为了更好的使用本产品的所有功能, 请您在使用产品之前仔细阅读本使用说明介绍的产品功能、使用说明以及注意事项。

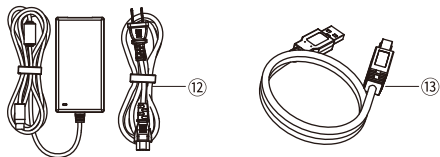
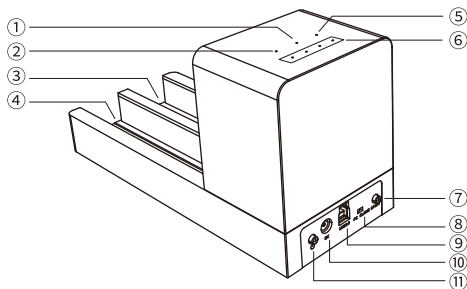
ORICO®为深圳市元创时代科技有限公司注册商标。

本使用说明中提及的其他所有产品名称、商标、服务名称和公司名称, 由其各自的所有者拥有。

本使用说明所提及的信息仅供参考, 深圳市元创时代科技有限公司保留随时修改本使用说明中任何信息的权利, 无需提前通知。除非有特殊约定, 本使用说明仅作为使用指导, 本使用说明中的所有陈述、信息等均不构成任何形式的担保。深圳市元创时代科技有限公司不对因使用本使用说明相关内容及本使用说明描述的产品而产生的任何特殊的、附带的、间接的、继发性的损害进行赔偿, 也不对任何利润、数据、商誉或预期节约的损失进行赔偿。在相关法律允许的范围, 在任何情况下, 深圳市元创时代科技有限公司对您因为使用本使用说明描述的产品而遭受的损失的最大责任 (除在涉及人身伤害的情况下根据适用的法律规定的损害赔偿外) 以您购买本产品所支付的价款为限。

## Product overview

ORICO 6528US3-C is a multifunctional dual-bay hard drive duplicator, which adopts SATA3.0 clone chip scheme, without connecting to the computer, it can support one-touch operation of double hard disk offline clone, and the clone transmission rate can reach up to 6Gbps. it can also be connected to the computer through USB3.0 data cable to read/write two hard drives simultaneously, and support the 5Gbps transmission as well as UASP acceleration protocol.



- |                         |                            |
|-------------------------|----------------------------|
| ① Power indicator       | ② Target disk indicator    |
| ③ Source disk slot      | ④ Target disk slot         |
| ⑤ Source disk indicator | ⑥ Clone progress indicator |
| ⑦ START button          | ⑧ PC/CLONE button          |
| ⑨ USB3.0 port           | ⑩ DC port                  |
| ⑪ Power switch          | ⑫ Power adapter            |
| ⑬ USB3.0 data cable     |                            |

## Features

- Adopts SATA3.0 main control chip, the clone copy transmission rate can reach up to 6Gbps.
- Supports one-touch offline clone copy function.
- Supports to read two hard disks simultaneously, provides a fast and convenient data transmission and file interactive backup.
- Compatible with various 2.5/3.5 inch SATA HDD/SSD.
- The external USB3.0 interface output can support 5Gbps high-speed transmission.
- The free-tool design can support the fast disassembly of hard disk.
- The energy-saving intelligent dormancy function can improve the service life of hard disk.
- The LED indicator can monitor the working state of the hard disk at any time.
- Plug and play, hot-swapping supported.



## Specifications

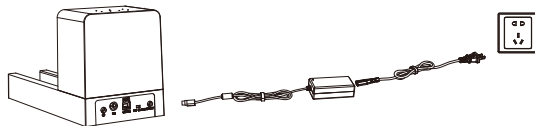
Model	6528US3-C
Dimensions	212(L)×114(W)×90(H)mm
Material	ABS material
Input Interface	SATA3.0
Output Interface	USB3.0
Transmission Rate	5Gbps
HDD Supported	2.5/3.5 inch SATA HDD/SSD
Data Cable	1M USB Type-A/M to USB Type-B/M
Supported System	Windows / Mac / Linux

## What's in the box

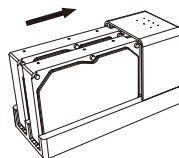
ORICO Dual bay Hard Drive Duplicator -----	1PCS
Power Adapter (12V ---4A) -----	1PCS
USB3.0 Data Cable -----	1PCS
User Manual -----	1PCS
Service Card -----	1PCS

## Quick Start Guide

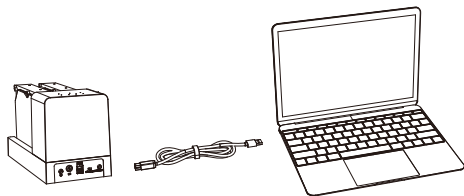
1. Connect the external power adapter to the duplicator.



2. Insert the hard disk into the duplicator.



3. Connect it to the computer with USB3.0 data cable.



4. Switch to "PC" mode, turn on the power, the computer will automatically install the driver, and it can be used normally after detecting the hard disk.

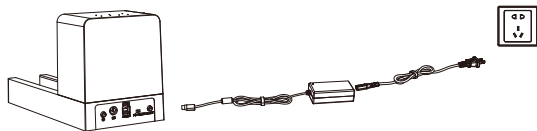


### Hard disk removal instructions

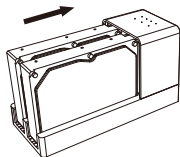
In PC mode, when you need to replace the hard disk or turn it off, please stop the read-write operation first, and then remove the device safely. A forced outage may cause data abnormal or lost.

## Hard disk clone steps

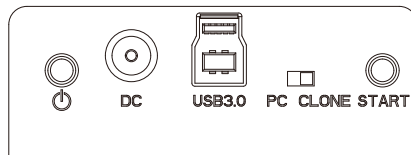
1. Connect the external power adapter to the duplicator.



2. Connect the disks. (Insert the source disk with original materials in the Source slot, and the target disk in the Target slot)

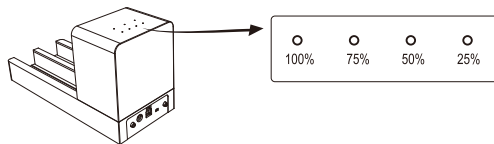


3. Turn on the power and switch to "CLONE" mode. After the duplicator scans and detects the hard disk automatically, the indicator will light up.



4. Press the START button twice continuously, then buzzer will ring "Di, Di" for the start of clone.

5. When clone begins, the corresponding indicators on the panel flash for the copy progress. When clone is completed, the 4 blue indicator lights are all on and ring the bell, and after 10 minutes, the hard disk will enter the dormant state.



### Error warning prompt function:

- If the hard disk is only inserted into the target disk position for cloning, the buzzer will continue to ring for errors.
- If only one hard drive is inserted for cloning, the buzzer will continue to ring for errors.

- If the capacity of the target disk is less than the source disk, the buzzer will ring for errors, and the indicator light of corresponding disc will flash.

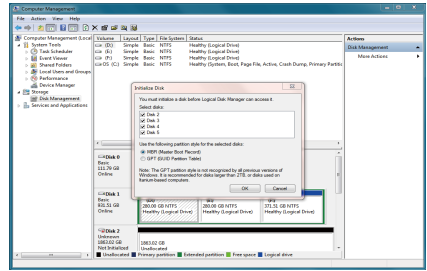
### ⚠ Clone notes:

1. The capacity of the target disk should be larger than or equal to that of the source disk, otherwise clone cannot start.
2. Please backup the data of the target hard disk first, otherwise, the data will be emptied once clone begins.
3. The clone time depends on the capacity of the hard disk, please be patient.
4. Please do not turn off the power or take down the disks before clone is finished.
5. The clone function does not require a computer, so no USB cable is needed.

## Initialize and Format New Drives under Microsoft Windows

New drive need to be initialized and formatted or it won't work. Please follow the following direction to initialize and format your drive if you are mounting a new drive.

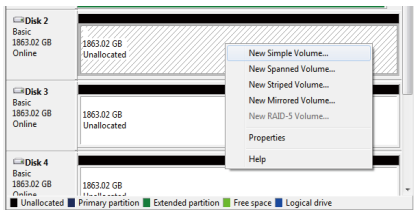
- (1) Please ensure you have mounted drive to ORICO dock properly and attach the orico dock to computer.
- (2) Right click on computer, Select "Manage", Open "Disk Management" in "Storage" of opened windows. A popup will come up here suggest a new drive need to be initialized. please select the disks and click ok will get it initialized.



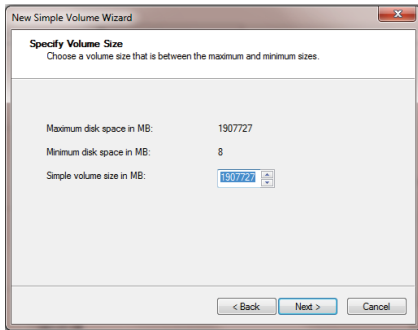
Note:

- A. If you are mounting a drive which not larger than 2TB and may using on a windows vista or earlier computer, initialize with partition style MBR is recommended.
- B. If you are mount a drive larger than 2TB, initialize with partition style GPT is recommended. or you will get 2TB of the drive applicable and the rest will be unable to initialize.
- C. If you closed this windows by mistake or the windows have never come up, right click on the "Disk Number" and select "Initialize Disk" will get the windows come up.

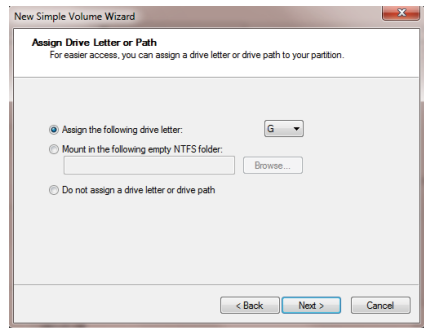
- (3) Right click on unallocated new drive, select "New Simple Volume" will start to add new volume and format it.



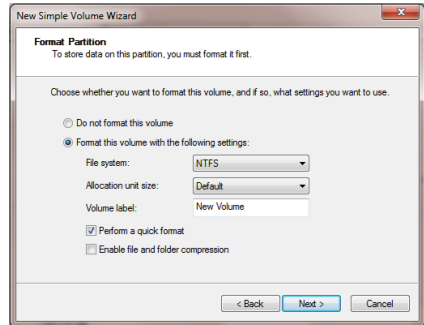
(4) Set the volume size of your new volume. You can customize the size you expected. Or you can set the size of the volume at maximum disk space to set the drive to one volume.



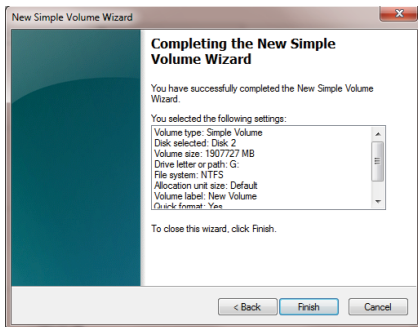
(5) Assign new drive letter for the new volume. drive letter such as C, D, E, F, G will shown in computer and explorer for application.



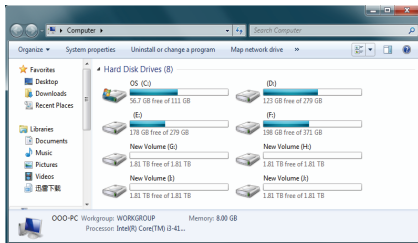
(6) Format your new volume. You can set the file system (NTFS or FAT32), allocation unit size and volume label here. Perform a quick format is recommended. Please click "Next" when everything is configured.



(7) Click "Finish" will Start to Format the Volume.



(8) The formatting will take 5 to 30 seconds. When the formatting is done, the new volume will be ready for any application.



## Declaration

ORICO Technologies Co., Ltd, all rights reserved.

Thank you so much for purchase ORICO product. Please Refer to this manual when using orico product or experienced issues. Additionally, please kindly contact ORICO customer care team if any concern.

ORICO® is registered trademark of ORICO Technologies Co., LtdAny other product, trademark, service or company mentioned herein is trademark or registered trademark of the respective owners.

This manual is for reference only and it's not a guarantee.

ORICO Technologies Co., Ltd reserve all rights of maintenance to this manual and shall not liable for any lost or damage resulting from this manual. Please kindly contact orico customer care team when any concern.

ORICO Technologies Co., Ltd shall not liable for compensation and maintenance of the following conditions.

1. Any special, incidental, indirect and secondary lost or damage.
2. Profit and revenue lost or damage.
3. Files, data, drive and device lost or damage.

Note: Compensation for lost or damage resulting from this manual or orico product shall not exceed the payment of your purchase to this product.

## FCC

This device complies with part 15 of the FCC Rules.

Operation is subject to the following two conditions:(1) This device may not cause harmful interference, and (2)this device must accept any interference received, including interference that may cause undesired operation.